



4671

**Features**

- 10µA Ultra High Resolution
- Large Conductor Diameter (30mm)
- AC Current in 5 Ranges (40mA, 400mA, 4A, 40A, 60A)
- Wide Frequency Response (40Hz ~ 1KHz)
- AC A, AC V, Ω and Continuity
- Large 3¾ Digit LCD (4000 Count)
- 40 Segment Fast Bargraph Display (30 times/sec.)
- Data Hold and Max/Min Hold
- Relative Measurement
- 600 Vrms Overload Protection in Resistance Range

**General Specifications**

|                               |   |
|-------------------------------|---|
| <b>Jaw Opening</b>            | Cable Dia 30mm. max. (approx.)  |
| <b>Battery Type</b>           | Two 1.5V SUM-3  |
| <b>Display</b>                | 3¾ LCD with 40 Segment Bargraph   |
| <b>Range Selection</b>        | Manual  |
| <b>Overload Indication</b>    | OL  |
| <b>Power Consumption</b>      | 15mA (approx.)  |
| <b>Low Battery Indication</b> | B   |
| <b>Sampling Time</b>          | 3 time/sec. (display)<br>30 time/sec. (bargraph)                              |
| <b>Operating Environment</b>  | -10° to 50°C, RH < 85%  |
| <b>Storage Environment</b>    | -20°C to 60°C, RH < 75%   |
| <b>Altitude</b>               | up to 2000M   |
| <b>Dimensions</b>             | 210 x 72 x 36 mm  |
| <b>Weight</b>                 | 210gms Including Battery (approx.)  |
| <b>Accessories</b>            | Carrying Case x 1, Users Manual x 1, Battery (installed), Test Leads x 1 pair |

**Specifications** (23°C ± 5°C)

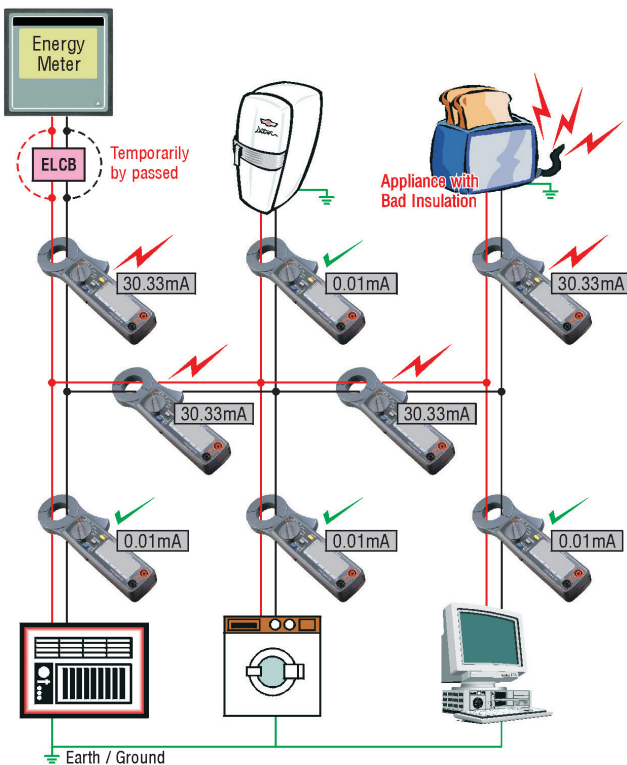
| AC Current      |            | Accuracy          |                    |
|-----------------|------------|-------------------|--------------------|
| Range           | Resolution | 50/60 Hz          | Wide (40Hz ~ 1KHz) |
| 40 mA           | 10 µA      | ± 1.0%rdg ± 3dpts | ± 2.0%rdg ± 5dpts  |
| 400 mA          | 100 µA     |                   |                    |
| 4 A             | 1 mA       |                   |                    |
| 40 A            | 10 mA      |                   |                    |
| 60 A (0 ~ 50A)  | 100 mA     | ± 1.5%rdg ± 3dpts | ± 3.0%rdg ± 5dpts  |
| 60 A (50 ~ 60A) | 100 mA     | ± 3.0%rdg ± 5dpts | ± 3.5%rdg ± 5dpts  |

Though the Meter can Display upto 400A, the Calibration is valid upto 60A

| Resistance (Ω) and Continuity (Open Voltage 0.4V) |            |                   |          |               |
|---|------------|-------------------|----------|---------------|
| Range   | Resolution | Accuracy          | Beeping  | OL Protection |
| 40 ~ 400Ω   | 0.1Ω       | ± 1.0%rdg ± 2dpts | < 38.0 Ω | AC 600V       |

| AC Voltage (Input Impedance : 10 MΩ) |            |                   |                   |                     |
|--------------------------------------|------------|-------------------|-------------------|---------------------|
| Range                                | Resolution | Accuracy          |                   | Overload Protection |
|                                      |            | 50/60 Hz          | 40 ~ 1KHz         |                     |
| 400V                                 | 0.1V       | ± 1.5%rdg ± 2dpts | ± 2.0%rdg ± 4dpts | AC 800V             |

**Fault Tracing of Live Installation**



**Application**

